

ARCHITECTURAL ELEMENTS (ON ALL FACADES)

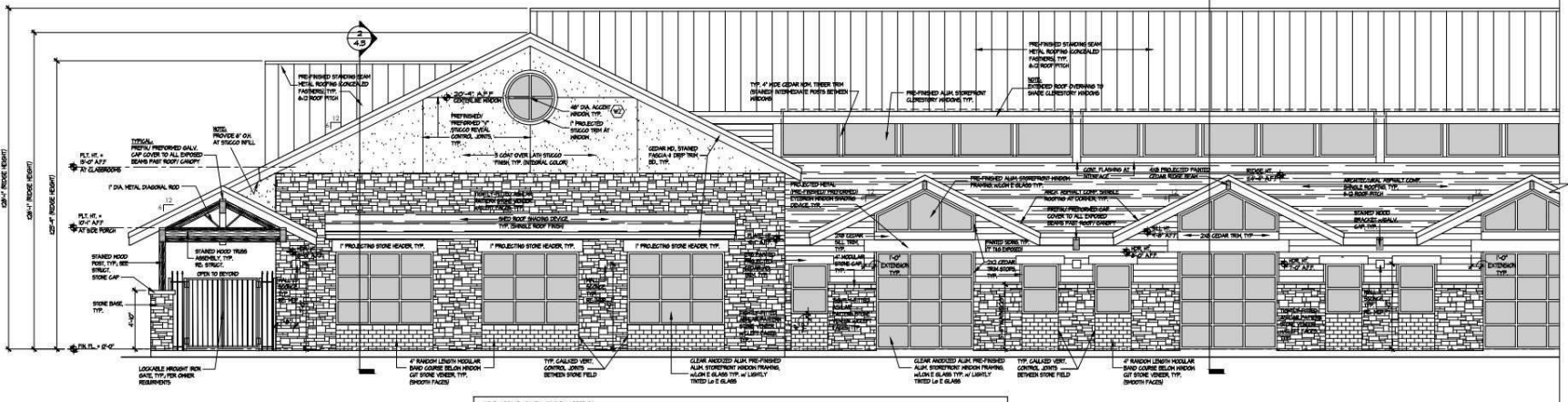
- A. CANOPIES & AWNINGS/ SUNSCREENS ARE APPLIED IN VARYING FASHION, ON ALL FACADES
- B. VARYING HEIGHT/ SLOPE PITCHED ROOF FORMS ARE APPLIED ON ALL FACADES
- C. VARYING SIZE & COMBINATIONS OF WINDOWS/ STOREFRONT OCCUR AT ALL FACADES
- D. ARTICULATED STONE BASES OF VARYING TYPES OF STONE COURSING, AND HEIGHTS ARE APPLIED
- E. ARCADES/ BREZEWAYS ARE INCORPORATED
- F. A MINIMUM OF TWO BUILDING MATERIALS, CONSISTING A MINIMUM OF 15% OF TOTAL WALL AREA, AT EACH FACADE, DIFFERENTIATED BY TEXTURE, COLOR, & MATERIAL DIFFERENCES, ARE EMPLOYED AT EACH FACADE
- G. DECORATIVE ARCHITECTURAL DETAILS (BEAM OUTRIGGERS & WOOD CEDAR MOLDINGS) ARE EMPLOYED THROUGHOUT

01 OVERALL FRONT ELEVATION - EAST

Scale: 1/8" = 1'-0"

EXTERIOR BUILDING FACADE PERCENTAGE AND MATERIAL LIST - EAST

BUILDING MATERIAL	SQUARE FOOTAGE	PERCENTAGE
STONE VENEER	588 SQ. FT.	47.0%
CEMENTITIOUS LAPPED STONE (HARDPLANE)	338 SQ. FT.	26.8%
STUCCO	207 SQ. FT.	16.5%
METAL EMBOS AWNING/ SOLAR PROTECTION	53 SQ. FT.	4.0%
PREFINISHED ALUM. METAL WATER TANK	98 SQ. FT.	7.9%
TOTALS	1,292 SQ. FT.	100%



02 PARTIAL FRONT ELEVATION - EAST

Scale: 1/4" = 1'-0"

ROOFING MATERIALS

- A. ASPHALT SHINGLES (MINIMUM 320 POUND 30-YEAR ARCHITECTURAL GRADE ASPHALT SHINGLES OR BETTER)
- B. METAL ROOFING PANELS

STANDARD NOTES

- A. HOOD MOUNTED MECHANICAL EQUIPMENT SHALL BE SCREENED ON ALL FOUR SIDES (USING PARAPET WALLS)
- B. ALL WALL MOUNTED EQUIPMENT (e.g. AIR HANDLING EQUIPMENT, COMPRESSORS, ETC.) MUST BE SCREENED FROM PUBLIC VIEW FROM A STREET OR PARKING AREA, AND ON A MINIMUM OF THREE SIDES. EXPOSED CONDUIT, LADDERS, UTILITY BOXES AND DRAIN SPOUTS MUST BE PAINTED TO MATCH THE COLOR OF THE PRINCIPLE STRUCTURE. NATURAL METALLIC FINISHES ACCEPTABLE ALTERNATIVE TO PAINT.

SOIC APPLICABILITY: (SUBCHAPTER 9)
 TOTAL FACADE AREA: 9,162 S.F.
 TOTAL FACADE AREAS EXCLUDING OPENINGS, WINDOWS AND DOORS: 8,285 S.F.
 MARK BUILDING HEIGHT REQUIRED BY CODE: 36'-0" (SEE CODE) PROPOSED BUILDING HEIGHT: 37'-10" (SEE CODE)

BUILDING MATERIALS	NORTH		SOUTH		EAST		WEST		TOTALS	
	S.F.	%	S.F.	%	S.F.	%	S.F.	%	S.F.	%
STONE VENEER	704 SF	34.4%	723 SF	41.4%	352 SF	34.3%	384 SF	40.3%	2,163 SF	37.5%
CEMENTITIOUS LAPPED STONE (HARDPLANE)	1,234 SF	40.3%	470 SF	38.3%	345 SF	55.0%	192 SF	20.2%	2,441 SF	44.1%
STUCCO	--	--	207 SF	11.8%	--	--	247 SF	28.0%	474 SF	8.2%
METAL EMBOS AWNING/ SOLAR PROTECTION	--	--	53 SF	3.9%	--	--	--	--	53 SF	0.9%
PREFINISHED ALUM. METAL WATER TANK	109 SF	5.3%	98 SF	3.4%	108 SF	10.7%	109 SF	11.8%	425 SF	7.3%
TOTALS	2,051 SF	100%	1,748 SF	100%	1,034 SF	100%	932 SF	100%	5,777 SF	100%

